

open up



to the new world
of
Digital Agriculture



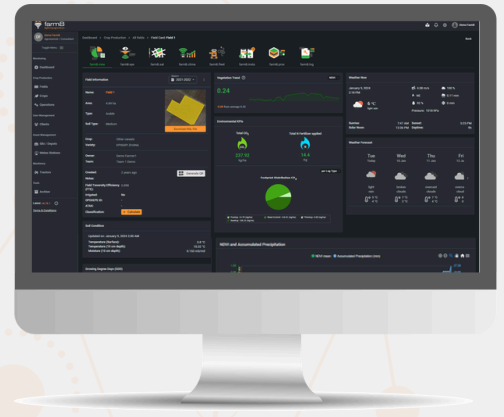
farmB
digitizing agriculture



farmB.view | One-stop overview

With farmB.view all the information of the field is available on the user's screen, with the option of automated data entry and overview of groups, producers, crops, varieties, etc.

Targeted recovery, geo-referenced visualization and management of data at the field level.



farmB.sat | Satellite data processing



With farmB.sat the user has direct access to satellite images at field level with automated updates. A wide range of vegetation indices (NDVI, SAVI, EVI, etc.) is also available, while the interconnection with all the platform's systems allows for automatic creation of management zones also utilizing our data fusion tool.

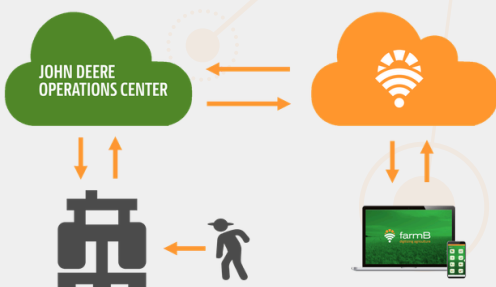
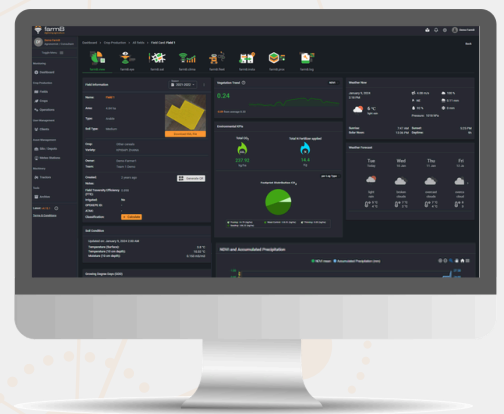
Generation of variable rate application files which are compatible with other external ISOBUS systems.



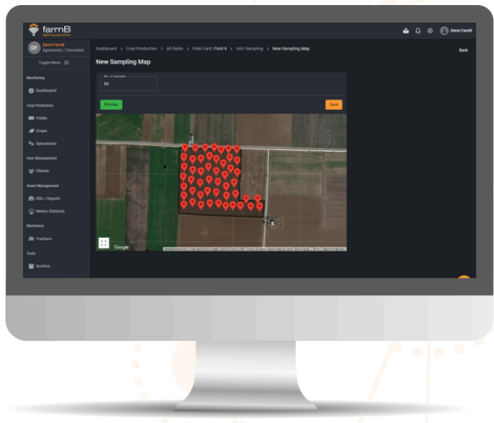
farmB.fleet | Fleet management

farmB.fleet is the assistant in fleet management with customized visualization and integration of machine and field data to support informed advisory in agriculture.

It also allows for the import of digital files from agricultural machinery (harvest and variable fertilization maps) ISOXML, etc., as well as the design of routes and tasks for agricultural machinery (exported to ready-to-use files).



HfarmB is now connected with the John Deere Operations Center™ through John Deere's API services. This connection allows farmB to multiply its data analytics and decision making value by interoperably interchanging yield data, VRA prescription maps and field and machinery features with the Operations Center.



farmB.eye achieves digital visualization at the field level. It offers targeted geo-referenced periodic sampling for monitoring crop growth, weed development, and disease progression.

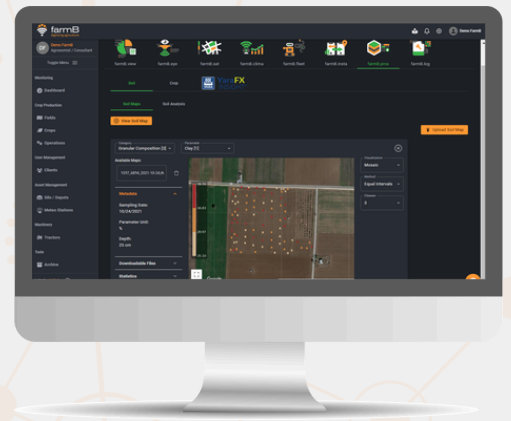
It also provides the ability for automated notifications through personalized alert mechanisms.



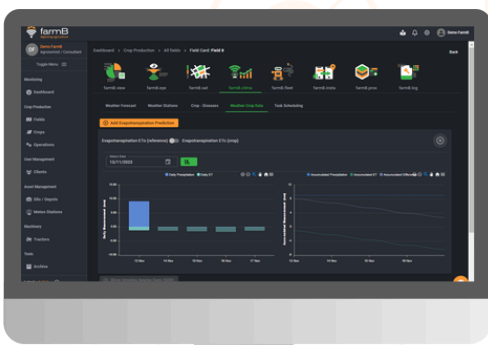
farmB.prox | Soil and crop mapping

With farmB.prox, the user can create soil property maps, while the optimal sampling points creation option allows for the best placement of sensors in the field. farmB.prox offers automated data collection and transfer, hence supporting grounded advisory services.

Navigation to points of interest is also possible through the farmB mobile application for smartphones.



farmB.clima | Climate data monitoring

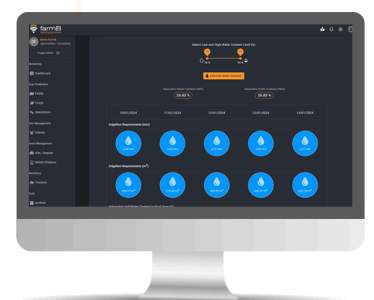


Through the targeted installation of sensor networks, monitoring data is simple through farmB.clima. The service provides cloud functionality for meteorological stations, and it allows for the integration of electronic traps to monitor insect population dynamics.

Personalized alert settings for insect infestations and disease forecasting for over 50 fungal diseases is also available.



Configuration, Programming and Integration
and continuous update of precision microclimate monitoring and tillage, irrigation and harvesting programming solutions.

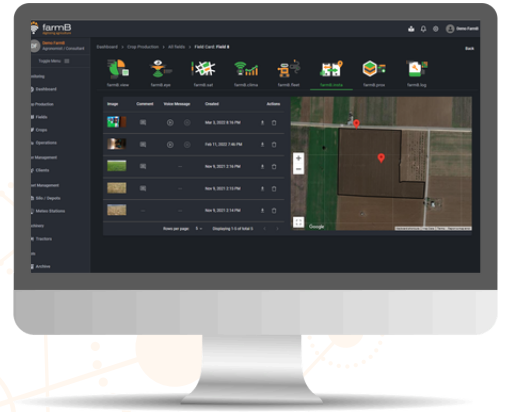




farmB.insta | Geo-references data exchange

farmB.insta allows for instant data transfer (e.g., images, notes, sampling data) directly to the web base of farmB.

Real-time advice with the ability to navigate between points of interest within the field and create crop and soil zones. The data logs sent are retained and readily available to the user upon request.



farmB.log | Digital operation log

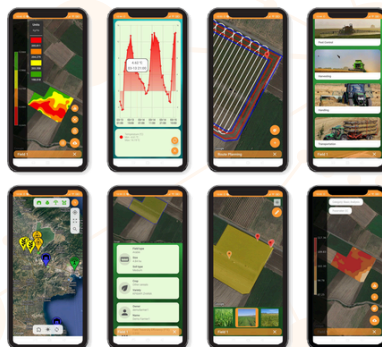


With farmB.log, recording tasks and inputs/outputs at the field level becomes easier than ever. The automated processing of recorded data allows for the creation of performance reports (CO2 emissions and Nitrogen efficiency) based on various criteria (field, crop, producer, group).

The environmental footprint calculation tool (CO2 emissions) is based on farm data rather than estimation models, increasing the accuracy of calculations and providing the ability to identify weak points for intervention.

mobile apps

The entire farmB system on your mobile phone



eight (8) mobile apps in one app interconnected to the web platform.



contact



+30 2316 024 922



farm-b.com



info@farm-b.com



@farmbdigital



@farmb



@farmb_digital

connect